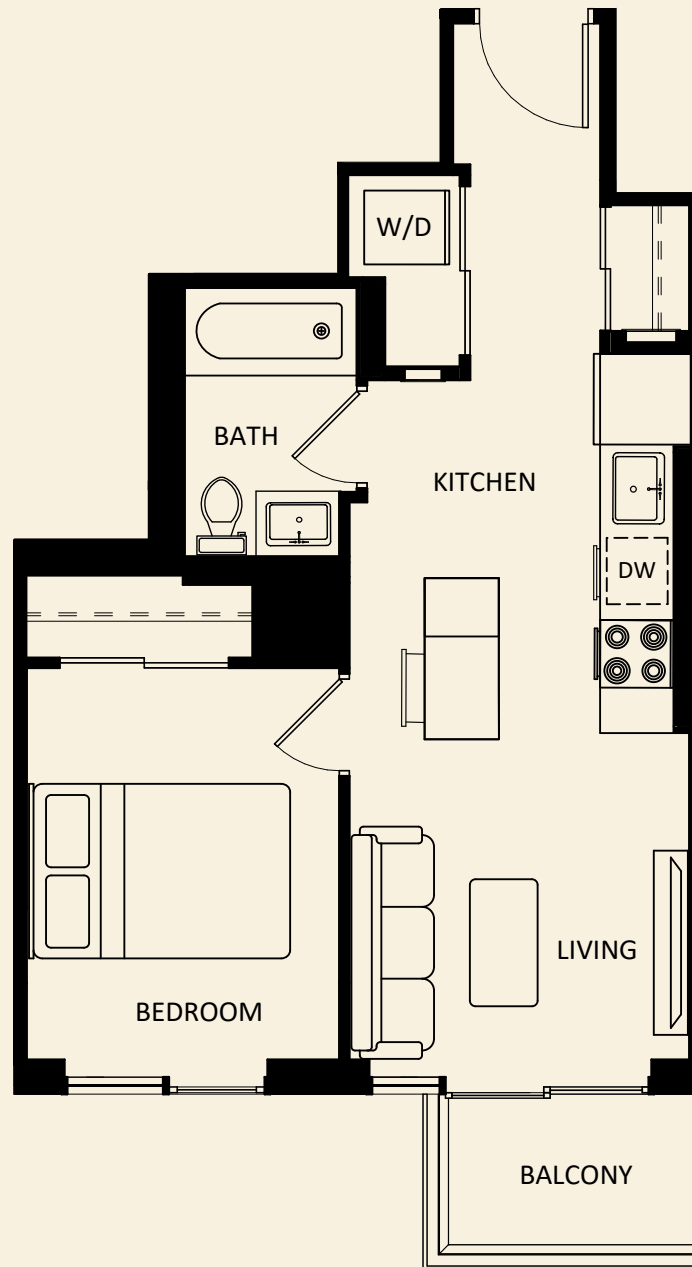


610 MARTIN GROVE

610 Martin Grove Road, Etobicoke

ONE BEDROOM - MODEL 1B-A

Approximately 504 sq. ft.



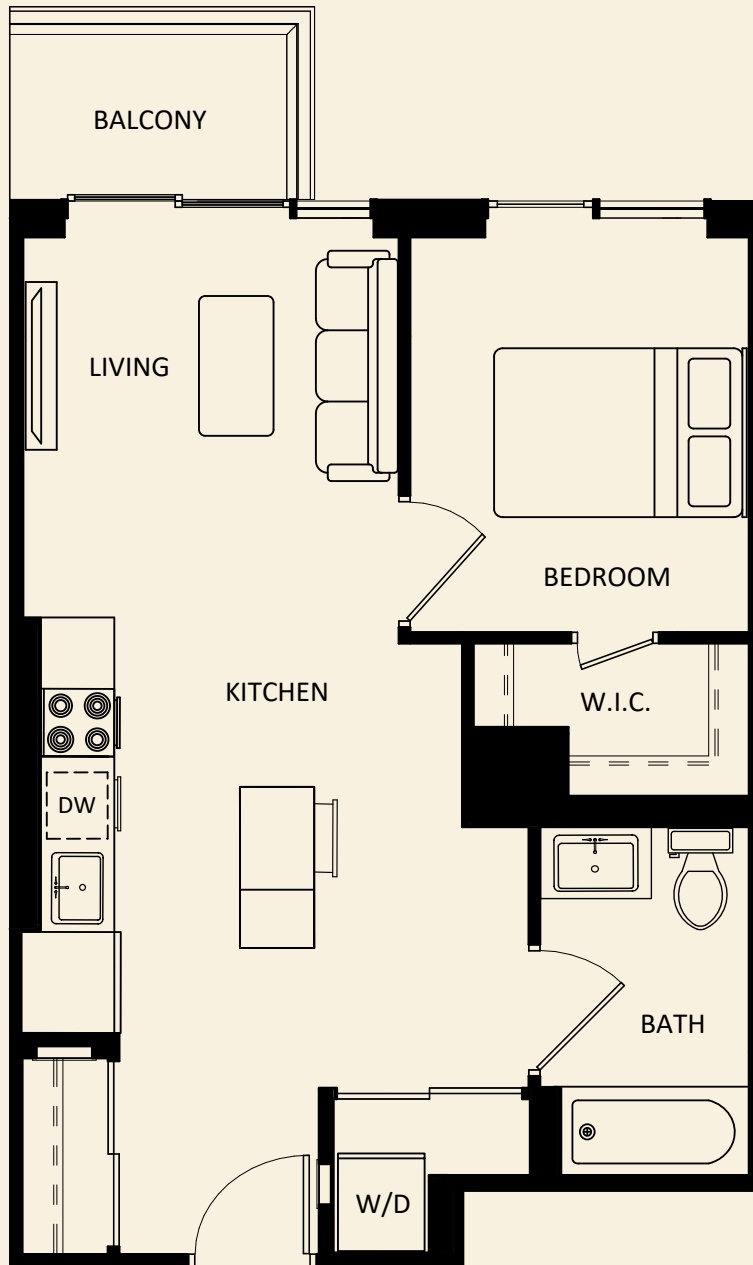
These floor plans are representative only. All dimensions are approximate.

610 MARTIN GROVE

610 Martin Grove Road, Etobicoke

ONE BEDROOM, ACCESSIBLE - MODEL 1B-B

Approximately 552 sq. ft.



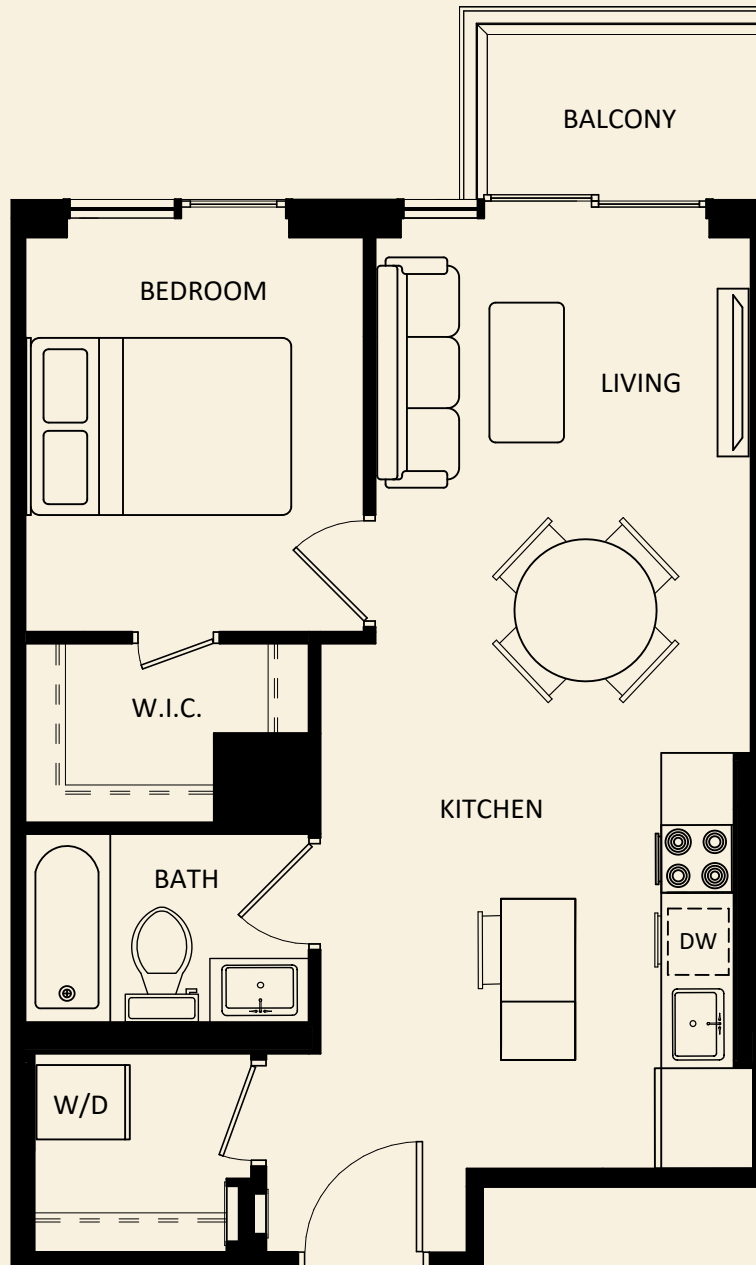
These floor plans are representative only. All dimensions are approximate.

610 MARTIN GROVE

610 Martin Grove Road, Etobicoke

ONE BEDROOM - MODEL 1B-C

Approximately 552 sq. ft.



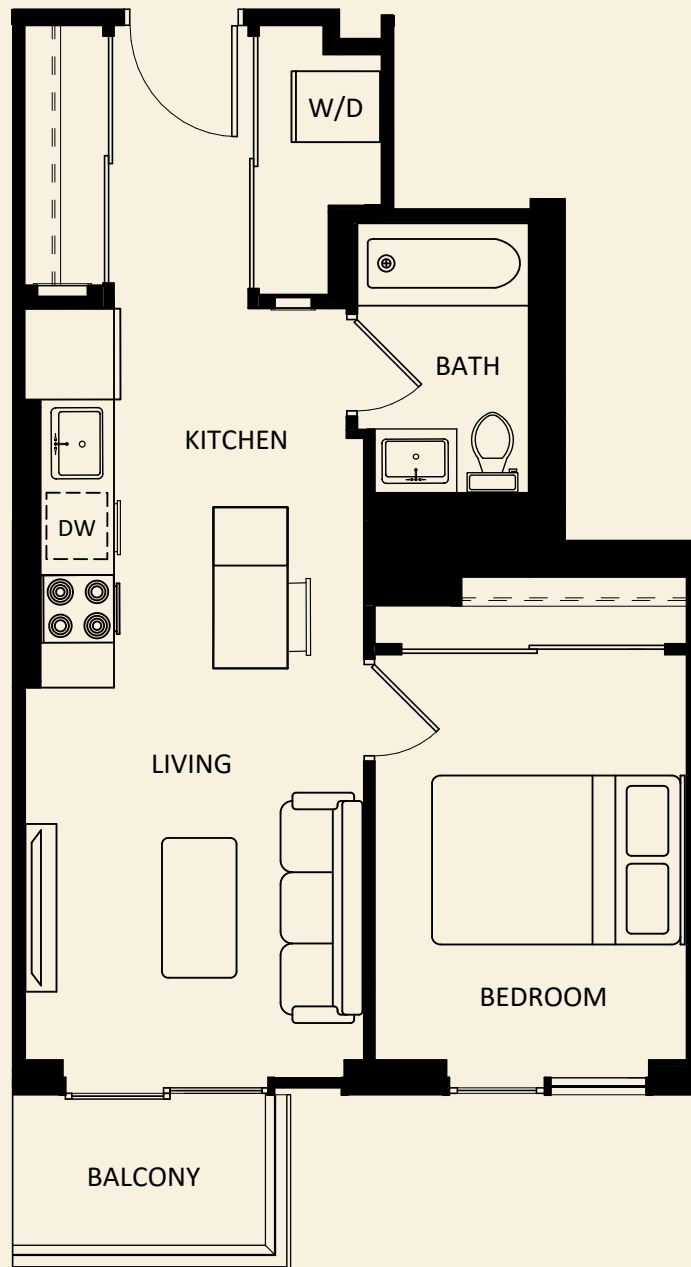
These floor plans are representative only. All dimensions are approximate.

610 MARTIN GROVE

610 Martin Grove Road, Etobicoke

ONE BEDROOM - MODEL 1B-D

Approximately 543 sq. ft.



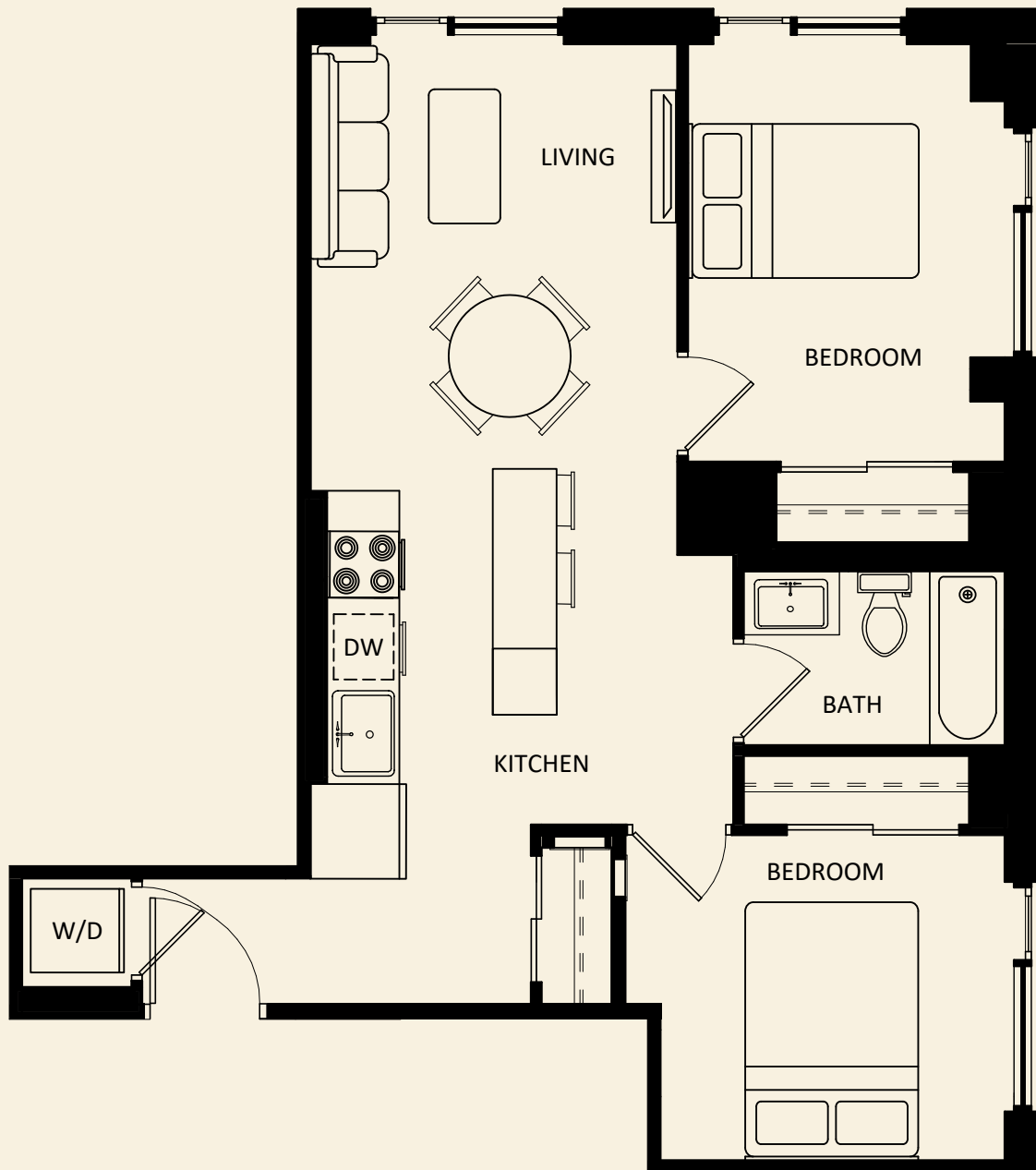
These floor plans are representative only. All dimensions are approximate.

610 MARTIN GROVE

610 Martin Grove Road, Etobicoke

TWO BEDROOM - MODEL 2B-H

Approximately 695 sq. ft.



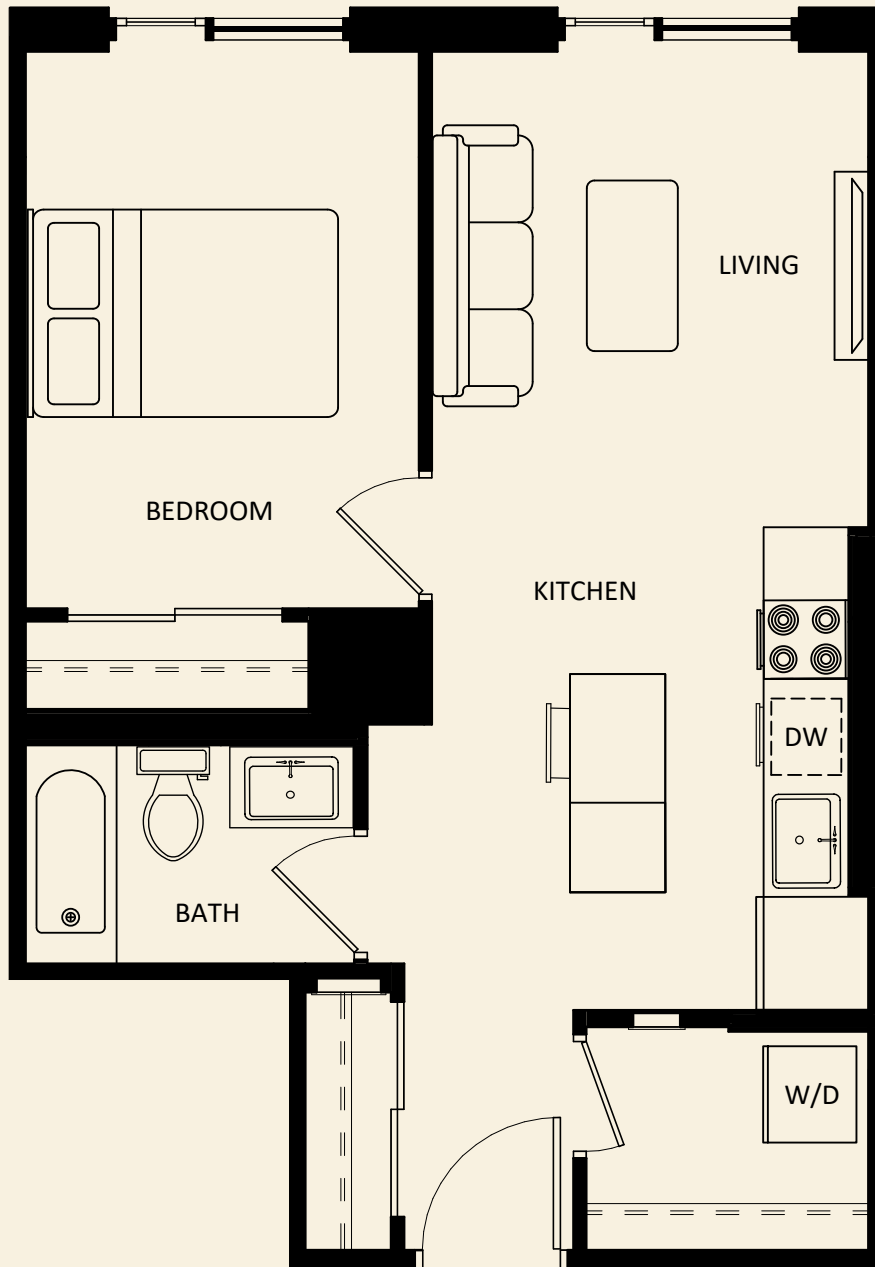
These floor plans are representative only. All dimensions are approximate.

610 MARTIN GROVE

610 Martin Grove Road, Etobicoke

ONE BEDROOM - MODEL 1B-O

Approximately 535 sq. ft.



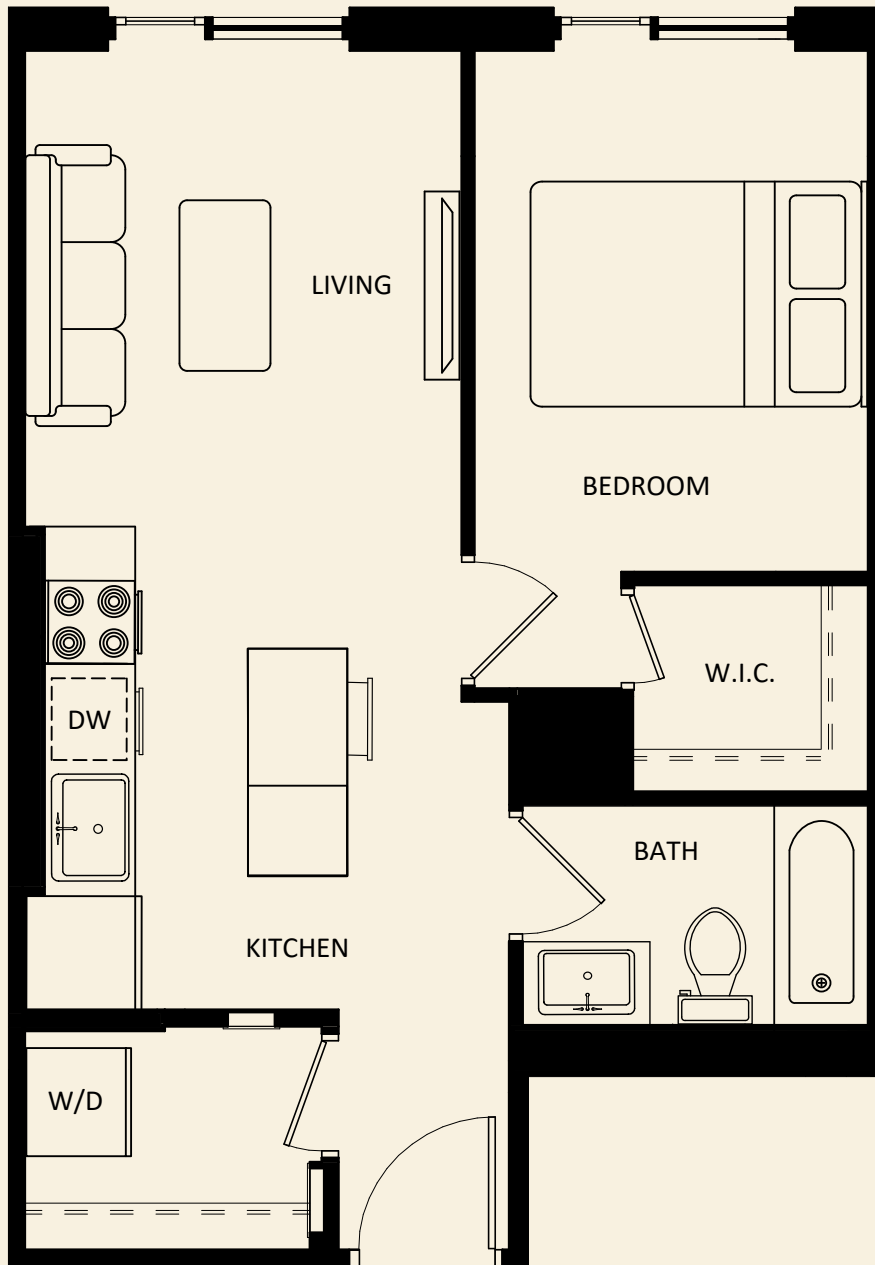
These floor plans are representative only. All dimensions are approximate.

610 MARTIN GROVE

610 Martin Grove Road, Etobicoke

ONE BEDROOM - MODEL 1B-P

Approximately 541 sq. ft.



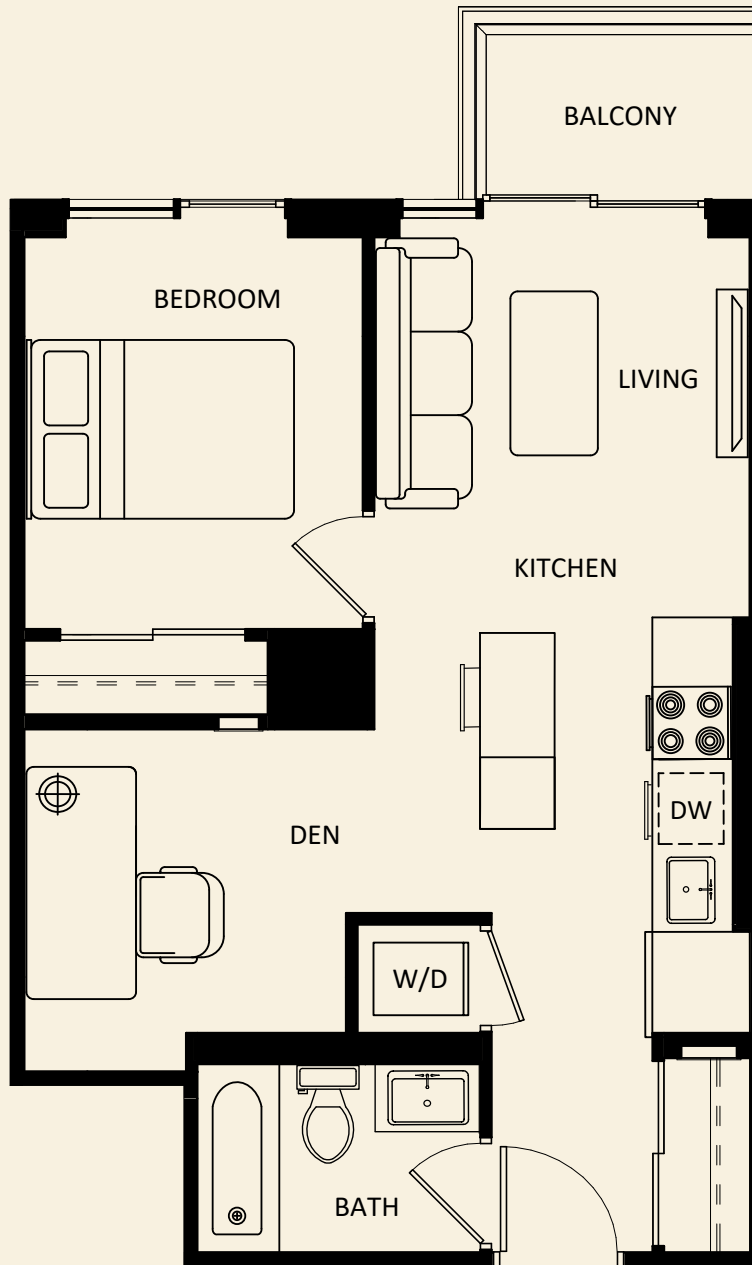
These floor plans are representative only. All dimensions are approximate.

610 MARTIN GROVE

610 Martin Grove Road, Etobicoke

ONE BEDROOM PLUS DEN - MODEL 1BD-B

Approximately 546 sq. ft.



These floor plans are representative only. All dimensions are approximate.

610 MARTIN GROVE

610 Martin Grove Road, Etobicoke

TWO BEDROOM - MODEL 2B-G

Approximately 854 sq. ft.



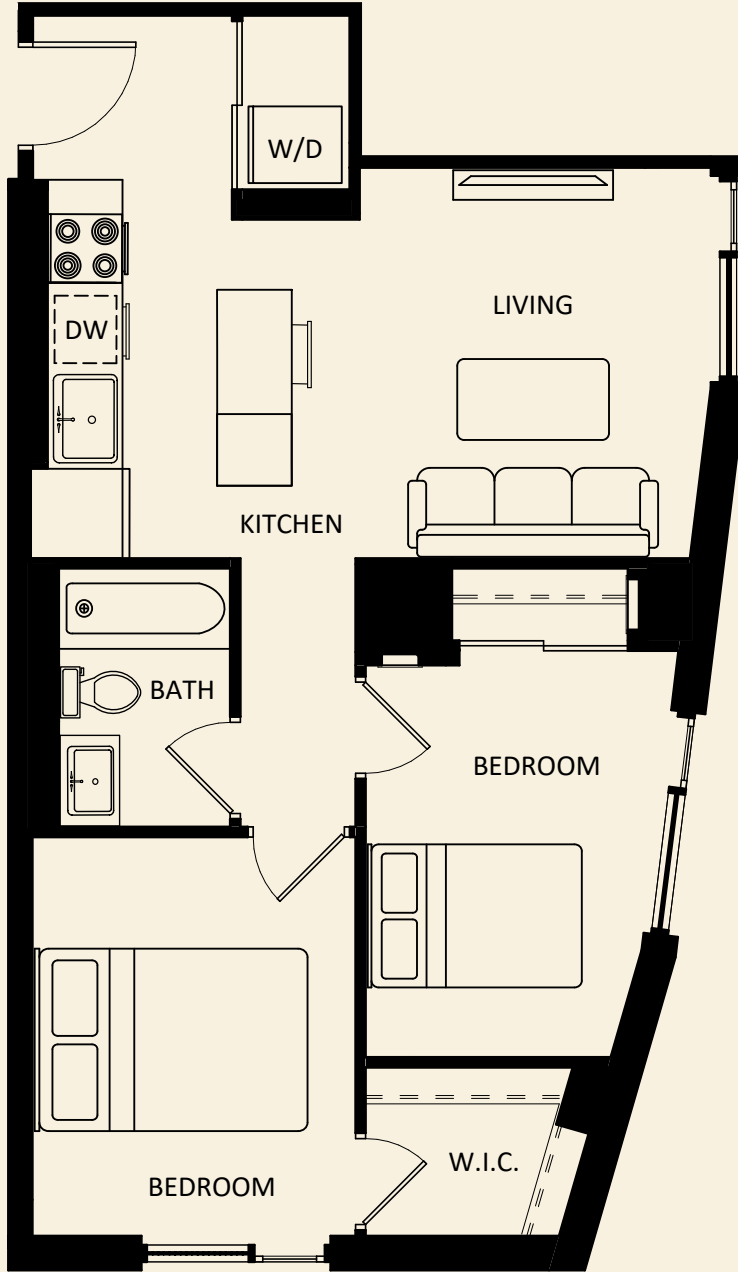
These floor plans are representative only. All dimensions are approximate.

610 MARTIN GROVE

610 Martin Grove Road, Etobicoke

TWO BEDROOM - MODEL 2B-1

Approximately 697 sq. ft.



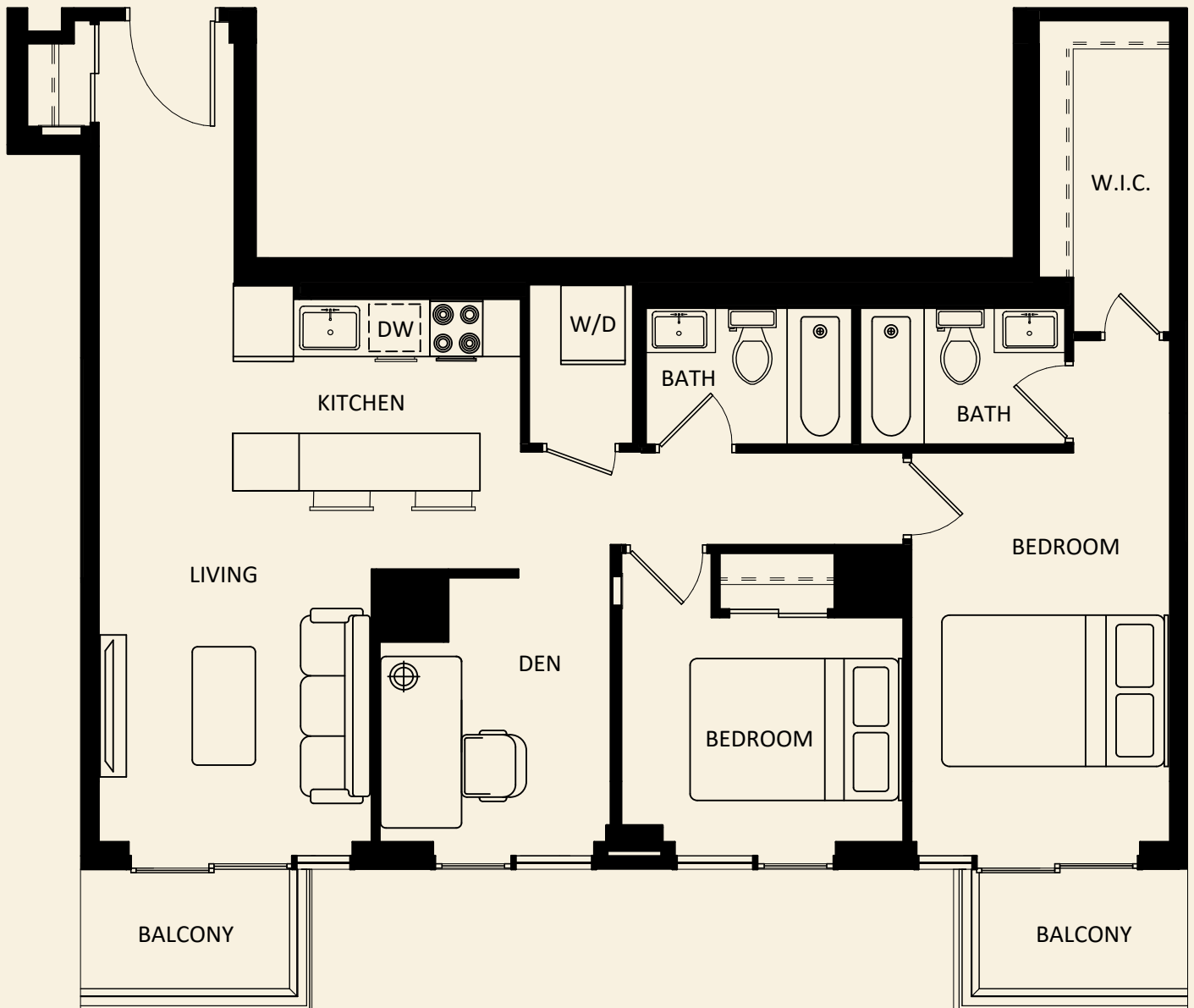
These floor plans are representative only. All dimensions are approximate.

610 MARTIN GROVE

610 Martin Grove Road, Etobicoke

TWO BEDROOM PLUS DEN - MODEL 2BD-A

Approximately 1,039 sq. ft.



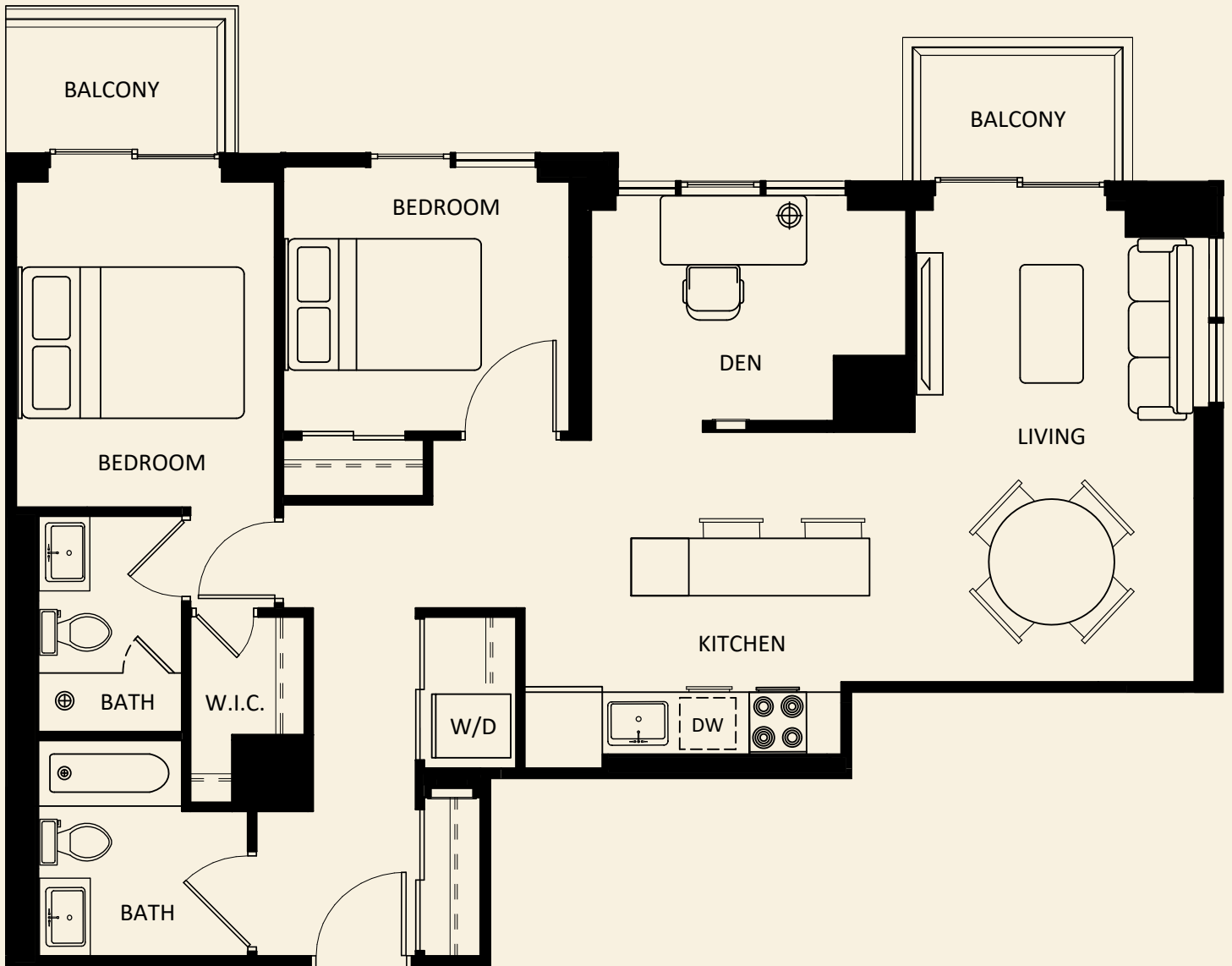
These floor plans are representative only. All dimensions are approximate.

610 MARTIN GROVE

610 Martin Grove Road, Etobicoke

TWO BEDROOM PLUS DEN, ACCESSIBLE - MODEL 2BD-B

Approximately 976 sq. ft.



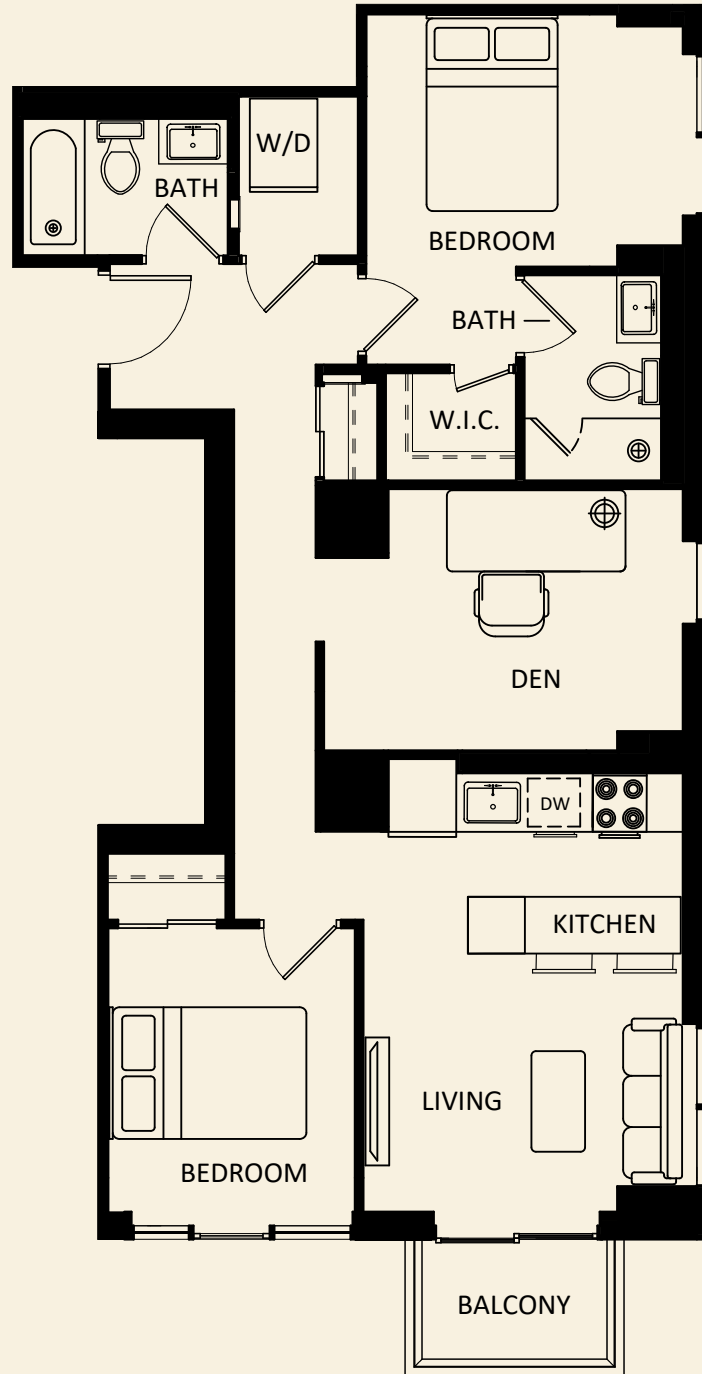
These floor plans are representative only. All dimensions are approximate.

610 MARTIN GROVE

610 Martin Grove Road, Etobicoke

TWO BEDROOM PLUS DEN - MODEL 2BD-C

Approximately 947 sq. ft.



These floor plans are representative only. All dimensions are approximate.